

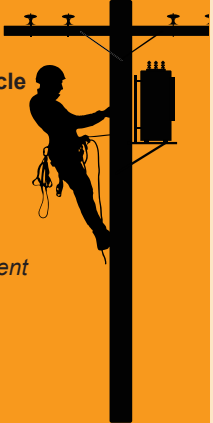


LINEMAN APPRECIATION

Lineman Appreciation Day | April 10, 2023



- Left side & inside vehicle**
 Left to right:
 Nic Alberson, *Operations Manager*
 Eric Zurakowski
 Keith Zimmerman
 Greg Olmstead
 Zach Sonnentag
 Quentin Muska
- Right side of vehicle**
 Front Row (l-r):
 Ben Modl
 Dan Ferris
 Kyle Glaus
 Trevin Jensen
 Kevin Scheidler,
Line Superintendent
- Back Row (l-r):
 Ed Rosseter
 Chris Larson
 Tyler Jones



This month, thank a lineworker... especially one of CVEC's own! Our crew installs and maintains overhead and underground power lines that keep your electricity flowing. They are on call 24/7 in case severe storms or other circumstances cause the power to go out. And if your power goes out, they sacrifice time with their families to go out and work in high-risk environments to restore it. When the power goes out, so do they. We appreciate the hard work they perform day in and day out. CVEC is thankful to the crew for working safely to keep the power on!

Safe Electricity.org

Behind Every Lineworker

IS A FAMILY WAITING FOR THEM TO COME HOME SAFE

#ThankALineworker

**CALL 811
 BEFORE
 YOU DIG**

Digging without locating underground utilities could leave neighborhoods in the dark, cause thousands of dollars in damages or cause severe electrical shock.

Safe Electricity.org®

MORE INFO
 Call811.com

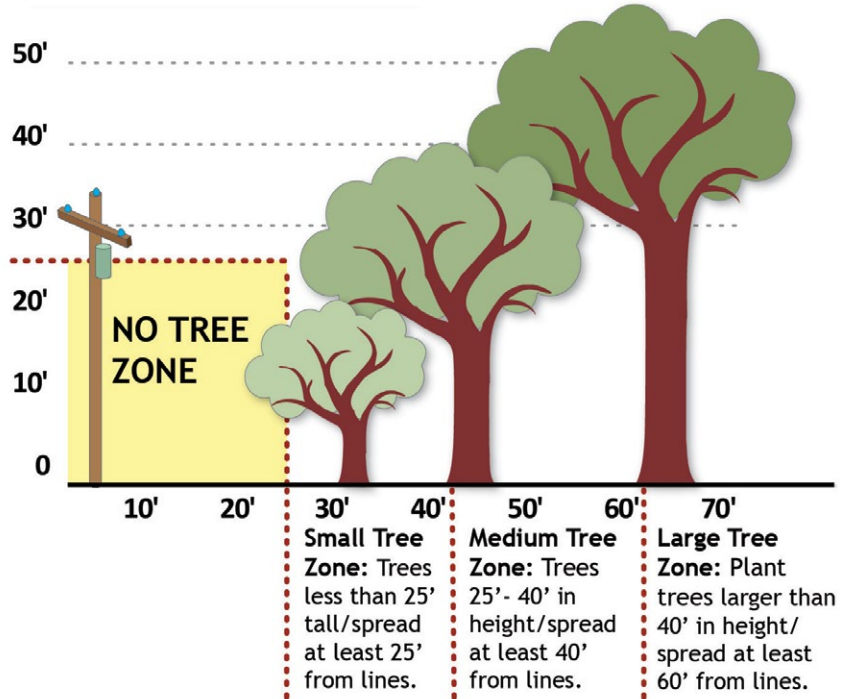
RIGHT-OF-WAY & PLANTING GUIDE

We all enjoy trees, but when they interfere with power lines, reliability and safety are compromised. That's why it's important to remove trees, branches and brush from the right-of-way.

Trees and vegetation in the right-of-way:

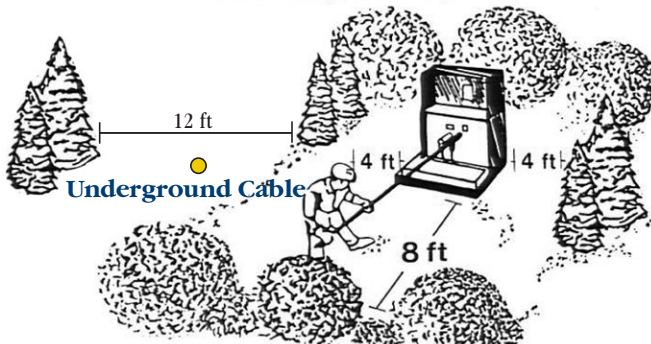
1. Cause power outages
2. Cause lights to blink
3. Obstruct visual inspections, making repairs difficult and costly
4. Block access for maintenance and repairs, causing delays
5. Waste electricity by drawing it into the ground
6. Become a fire hazard
Chippewa Valley Electric Cooperative works with the DNR to help prevent forest fires by removing trees near high-voltage power lines.
7. Become a safety hazard for utility workers and members
Children and adults should never climb, trim or touch trees that contact power lines.

TREE PLANTING GUIDE



UNDERGROUND PLANTING GUIDE

To provide space for operating this device please keep shrubs, plants and structures 8 feet from the front and 4 feet from the other sides.



Know what's below.
Call before you dig.

811 or
800-242-8511