



NEWSLETTER
Chippewa Valley Electric Cooperative



715.239.6800

OCTOBER 2023

www.cvecoop.com

CVEC RETURNS \$622,000 TO MEMBERS DURING CO-OP MONTH!

October is co-op month! It's a great time to celebrate one of the key elements of the cooperative business model – the return of capital credits to eligible members. This year, Chippewa Valley Electric Cooperative (CVEC) will return \$622,000 to more than 6,800 cooperative members.

You are an owner of your electric cooperative and capital credits reflect your ownership in the cooperative.

This year's capital credits will be paid out to members who purchased electricity from CVEC in the following years:

- 100% of 2000
- 100% of 2001
- 25% of 2002
- 10% of 2021
- 10% of 2022

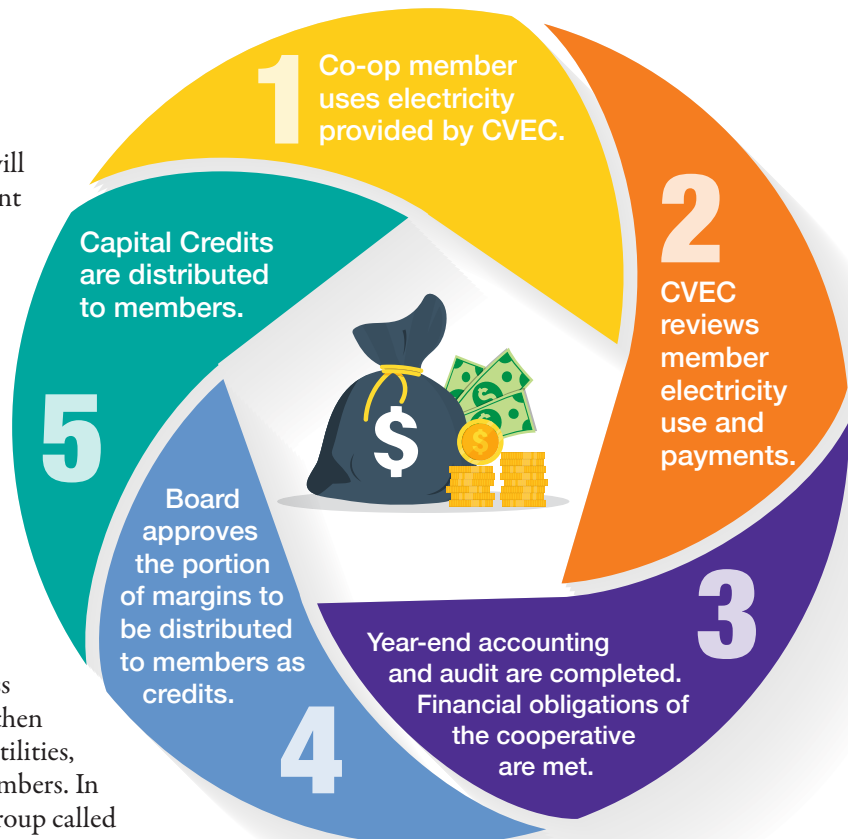
Members with a refund amount of \$100 or less will see a credit on their electric bill. When the amount of your capital credits refund is more than \$100, a check will be sent in a separate mailing. Please note: The checks are printed and mailed from La Crosse, WI and cannot be picked up from our office in Cornell.

How does the process work?

Capital credits are a unique benefit of your cooperative membership. Since 1937, nearly \$17 million has been returned to our members! As you pay your monthly electric bills, Chippewa Valley Electric Cooperative uses the income to grow, operate, and maintain a safe and reliable electrical system. Any money received over and above the cost of doing business is called margins. Your portion of the margins is then returned to you in the form of credits. In co-op utilities, the profits are returned to you, the consumer-members. In other types of utilities, the profits go to a select group called stockholders.

- Your share of the cooperative's margins in a given year is called your allocation. That allocation is based on the amount of energy you paid for during the year.
- Credits accumulate in an account in your name. When the board of directors approves a retirement of capital credits, they are approving the return of a specific percentage to be distributed to you. Capital credits are then issued to qualifying members.

Since 1937, nearly \$17 million has been returned to our members!





Rebate Deadline Reminder

Chippewa Valley Electric Cooperative wants to remind its members that there are a variety of rebates available for qualified purchases of energy efficient products. Rebates are in place through December 31, 2023, or until funds, by rebate or in total, are depleted. Please submit rebate forms as soon as possible to ensure that you can take advantage of our rebate program. Please note: Rebate forms and any additional requirements must be submitted no later than 3 months after the purchase date.

Rebate forms can be found online at www.cvcoop.com/rebates.php.



ENERGY VAMPIRES WORD SEARCH

Are energy vampires hiding in your home? These electronic devices consume electricity even when they're not in use and can drain home energy bills.

Read the tips below to learn how you can fight energy vampires, then find and circle the **bolded** words in the puzzle.



R	W	Y	E	S	B	G	S	V	F	S	V	V	X	Q
X	E	M	R	M	X	X	T	V	B	N	U	D	T	O
G	P	K	X	G	K	J	C	I	B	B	J	U	I	O
J	R	X	A	R	C	N	R	E	P	M	J	V	R	E
A	V	R	T	M	P	T	Y	Y	I	C	Z	U	W	L
T	R	W	Q	U	E	D	G	U	K	N	J	P	I	O
E	R	R	A	X	N	E	K	Z	X	C	D	E	F	S
F	E	K	Y	S	V	Y	F	A	Y	E	H	Z	E	N
Y	R	N	L	T	F	I	L	F	A	Q	W	O	U	O
O	A	A	W	V	Z	D	E	H	O	X	O	L	N	C
G	N	K	Z	T	T	Y	S	K	R	C	L	K	A	E
T	Q	S	D	G	M	J	S	W	W	X	S	N	M	
Z	E	R	E	G	R	A	H	C	E	N	O	H	P	A
B	A	C	T	T	Z	K	Q	N	U	X	E	M	Y	G
L	A	P	T	O	P	C	O	M	P	U	T	E	R	S

Tips to Fight Energy Vampires:

- If your phone is juiced up, unplug your **phone charger**.
- Tell your parents to unplug the **coffee maker** when they're finished brewing.
- When you're finished playing that new game, unplug your **game console**.
- Unplug **laptop computers** when you're done with homework.



Underground Service Deadline

October 1 – Service Upgrades
October 15 – New Service

When the ground freezes in Wisconsin, all underground cable construction comes to a halt until the spring thaw. ***If you have construction plans that are not already scheduled, call Chippewa Valley Electric Cooperative TODAY!***

We will do everything possible to meet your construction needs and install your electrical service before winter. However, all preliminary requirements must be met by October 1 for Service Upgrades or October 15 for New Service construction. All requirements must be completed to guarantee service installation before the ground freezes. Once the ground freezes, it will be too late to install the underground service you were hoping to have this fall.