



**SAVE THE DATE**

*Everyone is cordially invited...*



**Chippewa County**  
**WISCONSIN FARM TECHNOLOGY DAYS**  
*Growing to the tune of success*

*Hosted at*  
**Close Farms & Country Fest**  
**45° 2' 22.92" N**  
**91° 10' 43.932" W**




**AUGUST 13-15, 2024**

**CHIPPEWA COUNTY**  
*growing to the tune of success*

Chippewa Valley Electric Cooperative (CVEC) is proud to sponsor this year's Wisconsin Farm Technology Days (WFTD). Two of CVEC's members are being showcased in this summer's exciting event. Located in Cadott, both Close Farms and Chippewa Valley Music Fest have been selected as the host farm and host site, respectively.

Farming traditions have long been a part of the cooperative community. In fact, back in 1938, CVEC's original headquarters was literally built with the help of farming families. Chippewa Valley Electric is proud to see local farms continue to thrive and grow.

Wisconsin Farm Technology Days is a three-day outdoor event exhibiting the latest developments in production agriculture, including practical applications and recent research and technological developments. The event provides attendees with hands-on experiences,

educational opportunities, and access to cutting-edge equipment and solutions in the farming industry. As the largest outdoor agricultural event in the state, it welcomes more than 45,000 attendees, with more than 500 commercial and educational vendors.

This is the only farm show of its size in the United States that is organized and run entirely by volunteers. "Volunteers make Wisconsin Farm Technology Days run and 2024's show will be no exception," said Charlie Walker, president of Chippewa Economic Development Corporation (CEDC). "As the event approaches, now is the time to look to the community for volunteers because we need to remember that all proceeds of WFTD benefit the local agriculture community in terms of scholarships. Also, the proceeds will be utilized to help improve the Northern Wisconsin State Fairgrounds' ag facilities."

*If you are interested in volunteering for this fascinating event, please email [info@wifarmtechdays.org](mailto:info@wifarmtechdays.org) or call 920.644.3551 to provide your name and contact information.*

# APRIL 1 SCHOLARSHIP DEADLINE APPROACHES

CVEEC is proud to continue the tradition of offering scholarships to graduating high school seniors of co-op member families. The cooperative's scholarship program began in 1998, and since its inception has provided more than \$206,000 in scholarships to area students. This spring

The value of each scholarship is \$500.

we're eager to support local students as they continue their education.

The value of each scholarship is \$500 and applications can be obtained from CVEEC's website (cvecoop.com) or by contacting the cooperative office.

The deadline to return completed scholarship applications to the cooperative office is April 1, 2024. The applications will be reviewed by a special Scholarship Committee, and the scholarships will be awarded to recipients at their honors ceremony or at graduation.

If you have any questions about the scholarship program, please contact Nicole at Chippewa Valley Electric Cooperative, 715.239.6800 or nwsime@cve.coop.



## BEST BETS FOR

# Winter Savings

Energy consumption spikes during winter months as we spend more time indoors and heating systems work overtime. You can help reduce demand and strain on the electric grid by conserving during peak energy times. Reducing energy use will also help lower your energy bills.

### UNPLUG WHEN POSSIBLE



Turn off unnecessary lights and electronics when you aren't using them.

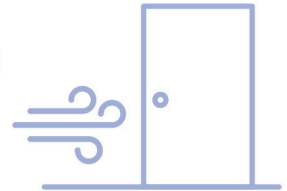


### MAINTAIN HEATING EQUIPMENT

Maintain your heating system by replacing dirty, clogged filters and scheduling an annual inspection for necessary maintenance.

### ELIMINATE DRAFTS AND AIR LEAKS

Seal air leaks and drafts around windows and exterior doors.



### USE APPLIANCES WHEN ENERGY DEMAND IS LOWER

Run large appliances like clothes washers, dryers and dishwashers early in the morning or before you go to bed.



### LOWER THE THERMOSTAT

Home heating accounts for a large portion of energy consumption. Adjust your thermostat to the lowest comfortable setting (68 degrees or lower).



## BE PREPARED FOR WINTER STORMS

At Chippewa Valley Electric Cooperative, we do everything we can to prevent and minimize outages. We have an aggressive vegetation management program to reduce the possibility of trees falling on lines, and we have installed advanced monitoring equipment in the field to help pinpoint the exact location of the outages so power can be restored as quickly as possible. However, sometimes nature has different plans for our service area.

Winter storms often bring the risk of power outages due to heavy snow, ice accumulation, and strong winds that can damage power lines and equipment. It's important to be prepared for such events. One of the primary steps in winter storm preparedness is to create an emergency kit with items like bottled water, nonperishable food, portable phone charger, flashlights, batteries, battery-operated radio, first-aid supplies, and hand sanitizer. Having these supplies readily available can make a significant difference during an outage, providing light, warmth, and sustenance until power is restored.

Another crucial aspect of preparedness is understanding how to safely use alternative heating sources. While generators, fireplaces, and space heaters can provide much-needed warmth during a power outage, they also pose potential hazards such as carbon monoxide exposure or fire risks. Read and follow the manufacturer's instructions for these devices, ensure proper ventilation, and place them away from flammable materials.

Staying informed and having a communication plan in place is vital during a winter storm power outage. Monitoring weather updates and notifications from the co-op can provide valuable information about the expected duration of the outage and when it's safe to resume normal activities. Establishing a communication plan with family, friends, and neighbors ensures that everyone is accounted for and can offer support if needed.

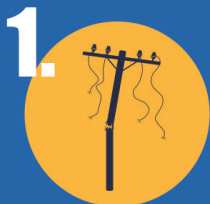
By taking these precautionary measures, you can navigate winter storm power outages with greater resilience and minimize the potential risks associated with extended periods without electricity.

If your power does go out but your phone is charged, you can go to the outage map on our website, [cvecoop.com](http://cvecoop.com), for up-to-date information.

You can go to the outage map on our website for up-do-date information.



Depending on the extent of storm damage, restoration can be a complex process. There are many steps in the assessment and restoration process:



1. Assess the damage and address safety risks



2. Restore power to public health and safety facilities



3. Repair distribution lines



4. Get power restored to homes and businesses



Remember, a neighbor may have power while you do not. Your home might be on a different feeder or transformer or the service line to your home may be damaged.

Never plug a portable generator into a wall outlet, which could cause power to backfeed into the overhead lines that utility crews are working on.



Regardless of the extent of an outage, **safety always comes first**. Be sure your emergency kit is ready.

**Always report your outage**, even if you think your neighbors already called. Report your outage by calling 715.239.6800.





Your Cooperative **CVVEC** Powering Your Future  
**CO-OP NEWS**  
**CELEBRATING OUR CO-OP COMMUNITY!**

### Med-A-Lert Service

Did you know the cooperative has been offering dependable 24/7 Med-A-Lert Service to the community for nearly 35 years? Med-A-Lert is a Personal Emergency Response System (PERS) that provides assistance at just the touch of a button. Our most popular device is the Belle+ with fall detection and GPS-based location services. This service can provide peace of mind for only \$38 per month.

### Automatic Payment Incentive for First-Time Participants

Sign up today and stop looking for a stamp and envelope! Plus, first-time auto-pay enrollees will receive a \$20 bill credit for enrolling in the automatic payment program. The form to enroll can be found on the co-op's website, [www.cvecoop.com](http://www.cvecoop.com), or you can call the office and request it. We are happy to help get you the form you need!

### Put SmartHub to Work for You!

Did you know you can pay your electric bill, enroll in auto-pay or paperless billing, and monitor your energy usage on your account from anywhere? And remember, first-time enrollees to the auto-pay program will receive a \$20 bill credit. Download the free SmartHub app for your smartphone or tablet, or access it online by clicking the green SmartHub icon in the upper right corner of our website at [www.cvecoop.com](http://www.cvecoop.com) and start improving your energy usage today!



### Energy Efficiency Rebates Offered

You may be eligible for a rebate on a recent investment in energy efficiency. Check out all of Chippewa Valley Electric Cooperative's rebate offerings at [cvecoop.com](http://cvecoop.com) or call the office at 715-239-6800 for more details. Most rebates require you to submit within three months of purchase. Don't miss out!



### Mark Your Calendars:

**Last Call!** The deadline to submit paperwork for director candidates from Districts 1 and 6 is February 10.

**Save the Date:** 87th Annual Meeting of CVEC members March 26

**High School Seniors:** Submit your completed scholarship application to the CVEC office no later than April 1



Chippewa Valley Electric Cooperative

317 S. 8th St., P.O. Box 575  
 Cornell, WI 54732  
 715.239.6800 • 1.800.300.6800  
[www.cvecoop.com](http://www.cvecoop.com) • email: [cvec@cve.coop](mailto:cvec@cve.coop)

*This institution is an equal opportunity provider.*

### Board of Directors

- District 1 – Dan Liske
- District 2 – Steve Johnson
- District 3 – Frank Draxler
- District 4 – Kevin Meistad
- District 5 – Joe Melville
- District 6 – Steve Wall
- District 7 – John Petska

**Russ Falkenberg, Jr., President/CEO**



Follow us on Facebook Office Hours: Monday–Friday, 7:30–4 p.m.

**Nicole Whipp-Sime, Editor**