

## *Congratulations*



...to Our 2014 Scholarship Winners!



*Anna Burlingame*



*Caitlin Hilger*



*Alexandra Holub*



*Caleb Kamrath*



*Jeffrey Milas*

**Tyler Baier** is the son of Randy and Debbie Baier of Chippewa Falls. Tyler plans to attend the University of Wisconsin–Madison, where he will be pursuing an education in computer science. One of his goals is to find himself a position where he can make his own advancement in the technological world. *(photo not available)*

**Anna Burlingame** is the daughter of Jackie Burlingame and the late Wendy Hoke of Holcombe. Anna plans to attend the University of Wisconsin–Eau Claire, where she will be majoring in health-care administration. She has the determination to succeed and make her mother proud of her hard work.

**Amanda Dombkiewicz** is the daughter of Richard and Sarah Dombkiewicz of Cornell. Amanda plans to attend the University of Wisconsin–Madison, where she will earn her bachelor's degree in finance, investment, and banking. In order to help out several small businesses, her goal is to become a financial manager.

**Sarah Elsner** is the daughter of Hans and Pamela Elsner of New Auburn. Sarah plans to attend the University of Wisconsin–Madison. She is interested in pursuing political science, economics, or business. One of her goals is to become a published author, regardless of

which career path she chooses.

**Maggie Flesher** is the daughter of Chris and Jane Flesher of Eau Claire. Maggie plans to pursue a career in nursing with a minor in Spanish at Winona State University. After she graduates from college, she hopes to return to Eau Claire in order to remain close with her family.

**Shantel Hartzell** is the daughter of Shane and Dana Hartzell of Gilman. Shantel plans to attend the University of Wisconsin–Madison, where she will study engineering. One of her goals is to appreciate life and its imperfections, no matter how stressful it can be. *(photo not available)*

**Clinton Heinze** is the son of Michael and Darlene Heinze of Bloomer. Clinton plans to attend the University of Wisconsin–Madison, where he will be pursuing a degree in chemical engineering. His goal is to find a job that has a focus on energy.

**Caitlin Hilger** is the daughter of Jeffrey and Debra Hilger of Bloomer. Caitlin plans to enroll in a physician assistant program after obtaining her bachelor's degree in college. Her personal philosophy on life is to appreciate little things and live in the moment.

**Alexandra Holub** is the daughter of Daniel and Jacqueline Holub of Boyd. Alexandra plans to attend the



*Amanda Dombkiewicz*



*Sarah Elsner*



*Maggie Flesher*



*Clinton Heinze*



*Matthew Salm*



*Benjamin Simmons*



*Riley Simmons*



*Morgan Webster*

University of Wisconsin–Madison, where she will be studying psychology. One of her goals is to carry her faith into her future life.

**Caleb Kamrath** is the son of Barry and Pam Kamrath of Eau Claire. Caleb plans to attend the University of Wisconsin–Stout, where he will study graphic design and interactive media. His goal is to work as a mobile interface designer at a software design firm.

**Lauren Lustek** is the daughter of Joseph and Marilyn Lustek of Eau Claire. Lauren plans to attend the University of Wisconsin–Madison, where she will pursue a teaching career. Her goal is to teach in a way that will inspire kids to reach their full potential. *(photo not available)*

**Jeffrey Milas** is the son of Jeffrey and Victoria Milas of Stanley. Jeffrey plans on becoming a biology teacher through his hard-working mentality. His goal is to teach that the environment must be protected, repaired, and respected by everyone.

**Daniel Oliver** is the son of Robert and Tamara Oliver of Jim Falls. Daniel plans to become an orthopedic surgeon, specializing in knees and elbows. He hopes to remain in the Midwest because he enjoys the people and the great outdoors. *(photo not available)*

**Matthew Salm** is the son of Paul and Catherine Salm of Bloomer. Matthew plans to pursue engineering at the University of Wisconsin–Madison. He hopes to acquire the skills necessary to reach the top of his field in order to make the largest impact possible.

**Benjamin Simmons** is the son of Randy and Carolyn Simmons of Boyd. Benjamin plans to complete a bachelor's degree in kinesiology to become a physical therapist, a physical education teacher, or an athletic trainer. One of his goals is to apply hard work and pride into anything that comes his way.

**Riley Simmons** is the daughter of Anthony Simmons of Jim Falls. Riley plans to attend St. Mary's University in Winona, Minnesota, where she will take the steps in becoming a pediatrician. Her goal is to develop a successful medical practice to help families that face difficulties.

**Morgan Webster** is the daughter of Scott and Joy Webster of Holcombe. Morgan plans to attend the University of Wisconsin–Superior, where she will major in social work, while specializing in adoption. One of her goals is to positively change as many children's lives as possible. ■

## CVEC's Right-of-Way and Planting Guide

A clear right-of-way (ROW) reduces power outages and improves safety for everyone. Chippewa Valley Electric's ROW program requires removing vegetation, typically from a 20-foot corridor on both sides of power lines to ensure safe conditions and reliable power. After the initial clearing, CVEC continues with regular maintenance. We appreciate the cooperation of our members.

### Why is a clear right-of-way important?

We all enjoy trees, but when they interfere with power lines, reliability and safety are compromised. That's why it's important to remove trees, branches, and brush from the ROW. Trees and vegetation in the ROW:

- Cause power outages
- Cause lights to blink
- Obstruct visual inspections, making repairs difficult and costly
- Block access for maintenance and repairs, causing delays
- Waste electricity by drawing it into the ground
- Become a fire hazard—*Chippewa Valley Electric works with the DNR to help prevent forest fires by removing trees near high-voltage power lines.*
- Become a safety hazard for utility workers and members—*Children and adults should never climb, trim, or touch trees that contact power lines.*

### How is the right-of-way cleared?

CVEC treats all members equally when removing vegetation. In most cases, all shrubs, brush, and trees are removed under primary (main), high-voltage overhead power lines. They are also removed, as necessary, underneath and around secondary, low-voltage power lines that bring power from the transformer to your meter.

Cutting and trimming is done by trained, professional utility tree trimmers using specific and proven standards typical to the industry.

The electric system is regularly inspected for dead, dying, and leaning danger trees. When found, they are marked and then trimmed or removed to eliminate threat to power lines.

### What happens to the cut wood and chips?

Logs are the property of the landowner. Branches and small debris are left to decompose where they're cut. In maintained yards, branches and small debris are chipped and removed unless otherwise requested by the member.

You may add your name to a waiting list for wood chips, and we *may* be able to bring a load to your property on a first-come, first-serve basis when we're cutting in your area. Chips are mixed wood, leaves, and pine needles. For chips or wood information, call 715-239-6800.

### What happens if I plant in the right-of-way?

In the best interest of all members, new plantings are not allowed in the right-of-way. Upon notification, plants need to be transplanted or removed.

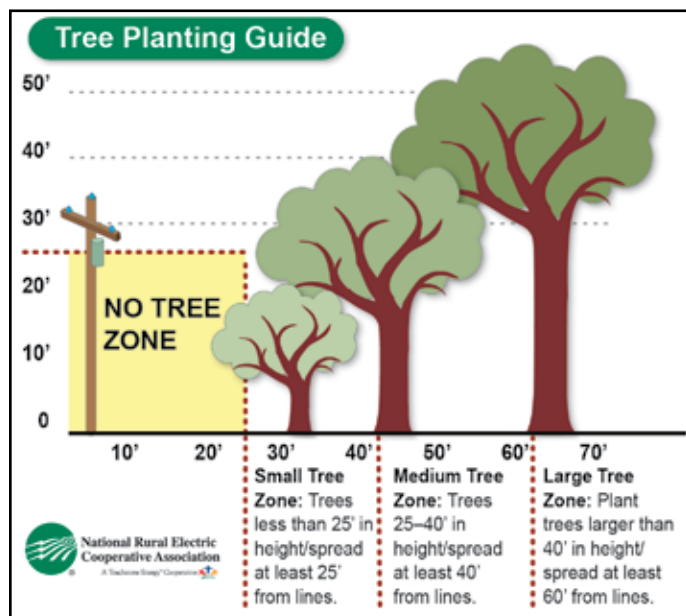
### Can power lines be buried?

In some situations, upon landowner request, overhead power lines may be reconstructed underground. Contact CVEC about costs, easements, and other requirements.

### Yard planting guide

All vegetation must be planted away from power lines, so that mature branches cannot grow into the ROW. Vegetation that is planted or grows into the ROW needs to be cut or trimmed. Vegetation within 20 feet on either side of the power line is at risk for removal due to power line maintenance, repair, and replacement. For safe, reliable electric service, follow the guidelines below.

Also, keep areas around electric meters and green transformer boxes clear of vegetation and obstructions that could limit access for repairs, and dial 811 or 800-242-8511 to have underground lines and cables located before you start digging. ■



## Chris Larson Joins CVEC Line Crew

Chris Larson has been employed by Chippewa Valley Electric Cooperative since June 2011 assisting in our Member Services Department and Operations Department. In May 2014, he completed the Electric Power Distribution Program at Chippewa Valley Technical College and was recently hired on full-time as an apprentice lineman. Chippewa Valley Electric is happy to have Chris join the crew! ■



Chris Larson

## Daniel Hladilek and Devin Kadlec Helping with Summer Projects

Chippewa Valley Electric Cooperative welcomed two 1,000-hour employees this summer. Daniel Hladilek and Devin Kadlec both completed the Electric Power Distribution Program at Chippewa Valley Technical College in May 2014. They are helping the co-op with various projects on our line crew. Keep up the good work, Danny and Devin! ■



Daniel Hladilek



Devin Kadlec

## John Petska Selected as Treasurer of Dairyland Board

Our very own John Petska, CVEC board chairman and Dairyland Power Cooperative director, was selected treasurer of the Dairyland Power Cooperative Board. With his new role as treasurer, John is part of the Executive Committee at Dairyland and will be more involved in setting policies and procedures. John's position with Dairyland Power Cooperative brings representation of Chippewa Valley Electric's needs and member concerns to the forefront. Congratulations, John!



John Petska

Chippewa Valley Electric purchases its wholesale power from Dairyland. With headquarters in La Crosse, Dairyland provides wholesale electricity to 25 member distribution cooperatives and 16 municipal utilities in four states (Wisconsin, Minnesota, Iowa, and Illinois). Dairyland's generation resources include coal, natural gas, hydro, wind, landfill gas, biomass, solar, and animal waste. For more information about Dairyland, visit [www.dairynet.com](http://www.dairynet.com). ■



**Chippewa Valley Electric Cooperative**

Todd Howard, President/CEO  
Nicole Whipp Sime, Editor

317 S. 8th St. • P.O. Box 575 • Cornell, WI 54732  
(715) 239-6800 • 1-800-300-6800

<http://www.cvecoop.com>

*CVEC is an equal opportunity provider and employer.*