

Your energy provider yesterday, today and tomorrow.

NEWSLETTER

Chippewa Valley Electric Cooperative

April 2012

75TH ANNUAL MEETING REVIEW



The 75th Annual Membership Meeting was held Saturday, February 25, 2012 at the Cornell High School Gymnasium. The business of the meeting was carried out:

- Approved 2011 Annual Meeting minutes
- Board Chairman, George Webb discussed the Cooperative operations and the sand mining activities in the Cooperative service territory.
- Office Manager, Dean Ortmann presented the Financial Report. Mr. Ortmann reported that electric margins were up on increased sales for 2011.
- President/CEO, Todd Howard gave an update on the 2011 operations of the Cooperative and the anticipated work for 2012. He also presented a brief Then and Now slide show.
- Cooperative Attorney, Mary Hoel conducted the Open Forum. A number of questions were presented and answered.
- Election results were presented with Donald Frei winning the election in District One over Arthur (Butch) Sime and George Webb winning an uncontested election in District Six.
- The proposed Bylaw Amendment was approved, see a copy of the amendment at right.

- The meeting concluded around noon with lunch being served.

BOARD REORGANIZED

Following the February 25, 2012 Annual Meeting, the Board held a reorganizational meeting.

John Petska was selected as the Board Chairman

George Webb was selected as the Vice-Chairman

Deone Goettl will continue to be the Secretary/Treasurer

Dennis St. Aubin is the Assistant Secretary/Treasurer

John Petska will continue as the Dairyland Power Director, with Clyde Shipman the Alternate Dairyland Power Director.

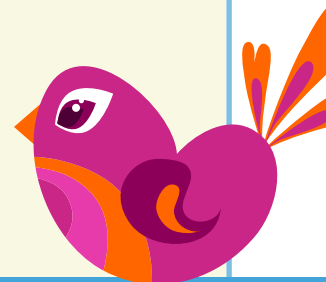
BYLAW AMENDMENT

Article VIII, Section 6. Security Interest in Patronage Capital.

The Cooperative shall have a continuing, first priority security interest in the patronage capital allocated and credited to any patron

to secure the payment of any and all obligations owed by such patron to the Cooperative and the performance of the patron's obligations to the Cooperative. The patron shall execute such documents as the Cooperative may request to confirm and perfect this security interest. The patron further authorizes the Cooperative to file appropriate financing statements to perfect that security interest. The rights of the Cooperative under the security interest hereby granted may be exercised in the event of the default in payment by the patron of the patron's obligations or in the event of the bankruptcy or insolvency of the patron. Such indebtedness of the patron shall be subtracted from the capital allocated and credited to the patron in any retirement thereof made to said patron or to his estate, heirs or surviving joint member. The Board of Directors shall determine when confirmation and perfection of the security interest shall be required.

OFFICE CLOSED
ON APRIL 6, 2012
FOR GOOD FRIDAY



FEBRUARY ELECTION RESULTS

ARTHUR (BUTCH) SIME REPLACED ON COOPERATIVE BOARD



The director elections held at the February 25, 2012 Annual Meeting saw long time director Arthur (Butch) Sime replaced by Donald Frei.

Butch was elected to the Board on February 20, 1982 and served continuously until this year's Annual Meeting. Butch was a dedicated director that took his position seriously and helped to move the Cooperative forward over the past 30 years.

We wish him well and thank him for his many years of service.

NEW DIRECTOR ELECTED AT ANNUAL MEETING



Donald Frei, Jr., resident of the Holcombe Township, was elected by the members to director of District 1 at the Annual Meeting on February 25, 2012. He is succeeding Arthur Sime.

Don retired in May 2001 after 35 years of service with NSP/Xcel Energy. He began his career as a Payroll Clerk on 6/1/1996. During his tenure, he held numerous supervisory and management level positions in the Customer Service area. Additionally, he developed and implemented policies and procedures associated with Customer Accounting, Credit & Collections, Meter Reading, and the Low Income Energy Assistance Program of the company. Don was also responsible for the coordination of all communication with the Wisconsin Public Service Commission regarding the resolutions of customer complaints and inquiries.

Don's goals for the future of the Cooperative are to provide direction and assistance that will reduce costs and generate new ideas to help assure the availability of safe, reliable electric energy to all members. In addition, he believes we have the responsibility to support the development of new, clean and green electric generation to help protect our environment and assure the availability for future generations.

There's fast.
And then there's,
"Holy cow
this is from
a satellite?"
fast.

Introducing Exede™ by ViaSat.
3 Plans. All with super fast 12 Mbps* speed.

STARTING AT
\$49.99
PER MONTH

Think what you could do with that.

exede™
by ViaSat

Chippewa Valley Satellite
715-239-3862

Contact us for service availability in your area. Service not available in all areas.
Minimum commitment term, early termination fee and/or unreturned equipment fee may apply.
One-time set up fee and month equipment lease or service fee may apply. Speeds are "up to" and are not guaranteed.
Actual speeds may vary. Requires a clear view of the southern sky. Exede is a service mark of ViaSat, Inc.

REMINDER !!!

CO-OP CANNOT LOCATE MEMBERS' UNDERGROUND WIRES

Quite often Chippewa Valley Electric Cooperative gets requests to locate members' underground wires. Due to safety and the liability risks, Chippewa Valley Electric is not able to locate members' wires. It is still important to call Diggers Hotline (dial 811) for locates when digging, just be aware that Chippewa Valley Electric will only locate its own wires (those that are up to the meter). Any wires beyond the meter, or meter pedestal, are your responsibility. Please contact your electrician to locate your wires. Often, wires to a well, septic system or outbuilding are overlooked and can result in costly repairs.

If you have any questions or concerns please contact our office at (715) 239-6800 or by email at cvec@cvecoop.com

CHIPPEWA VALLEY SATELLITE

YOUR LOCAL SOURCE FOR DIRECTV



715-239-3862



Chippewa Valley Electric Cooperative

P.O. Box 575
Cornell, Wisconsin 54732
(715) 239-6800 or 1-800-300-6800
www.cvecoop.com

Your Touchstone Energy® Partner 